

# Dornier *OptiCouple*™

Get Ahead of Your Bubbles



ESWL EFFICIENCY

# EFFICIENT

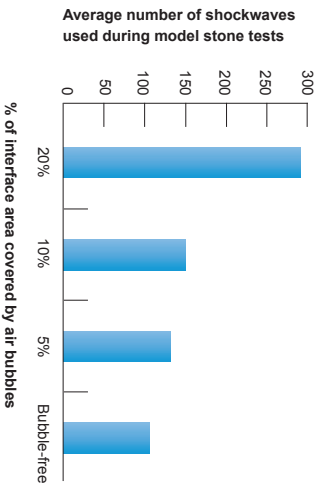
# SAFE

# EASY

## Dornier *OptiCouple*™ offers the latest advancement in ESWL Bubble-free Coupling increases ESWL Treatment Efficiency

For maximum ESWL treatment quality, the coupling of the shockwave source to the patient is one of the most important factors in energy transfer and hence in the quality of the stone fragmentation.

Air bubbles, cushion folds and incomplete coupling have an adverse effect on the propagation of the shockwaves and decrease the fragmentation efficiency. Study results show that an increased presence of air bubbles substantially increases in the number of shockwave pulses per treatment.



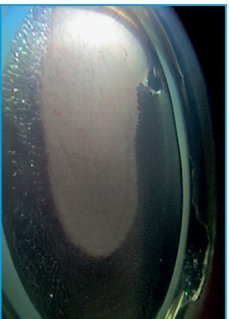
Up to 200 more shockwaves needed.

C. Bohris, S. Walther et al. 'Monitoring the coupling of lithotripter therapy head with skin during routine shock wave lithotripsy with a surveillance camera'. J Urol 187:157-63, 2012.

### Examples for Air Bubbles in the Coupling Area



1 Multiple air bubbles



2 Incomplete patient coupling



3 Below folds and wrinkles

*OptiCouple*™ is a real-time video imaging technology located within the therapy head to check for air bubbles in the coupling area between the water cushion and the patient. Operators can locate and remove possible regions of inadequate patient coupling under direct visual control.

With *OptiCouple*™, the quality of the coupling can be easily monitored by the user at any time of the procedure. If needed the user intervenes and improves the coupling within seconds and continuously ensure the best coupling quality throughout the treatment.

### Benefits for You and Your Patients

- Improved treatment efficiency
- Reduced number of shockwaves
- Lower energy levels
- Shorter treatment times
- Longer product lifetime
- Easy-to-use

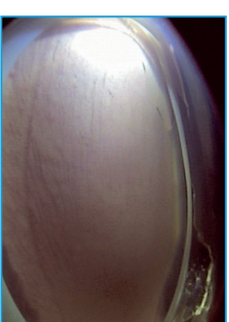
### Easy and Fast Removal of the Air Bubbles in the Coupling Area



1 Elimination of air bubbles



2 Hand swipe of the coupling interface



3 Perfect bubble free coupling after elimination under visual control

## Stammhaus

Dornier MedTech GmbH  
Argelsrieder Feld 7  
D-82234 Wessling  
Deutschland

## Amerika

Dornier MedTech America, Inc.  
1155 Roberts Boulevard  
Suite 100  
Kennesaw, GA 30144  
USA  
Tel.: +1-770 426-1315  
Fax: +1-770 426-6115  
Email: info@dornier.com

## Asien/Pazifik

Dornier MedTech Asia Pte Ltd  
51 Corporation Road  
Singapur 649806  
Tel.: +65-6665-5788  
Fax: +65-6665-6711  
Email: infoasia@dornier.com

## Japan

Dornier MedTech Japan  
Meguro Estate Building  
3-8-5 Kami-Ohsaki  
Shinagawa-ku, Tokio 141-0021  
Japan  
Tel.: +81-3-3280 3550  
Fax: +81-3-3280 3555  
Email: info.japan@domedtech.co.jp

## Europa

Dornier MedTech Europe GmbH  
Argelsrieder Feld 7  
D-82234 Wessling  
Deutschland  
Tel.: +49-8153-888 625  
Fax: +49-8153-888 444  
Email: infoeurope@dornier.com

Dornier MedTech Italia s.r.l.  
Via Arrigo Cavaglieri N. 26  
00173 Rom  
Italien  
Tel.: +39-06-72 35 289  
Fax: +39-06-72 35 302

Dornier MedTech Espana, S. L.  
Pedro Y Pons 9-11  
Edificio Masters  
E-08034 Barcelona  
Spanien  
Tel.: +34-93-203 9316  
Fax: +34-93-205 3814

Dornier MedTech France SARL  
Ferme de St Paul  
1545 route d'Epagny  
F - 74330 Sillingy  
Frankreich  
Tel.: +33-4-50 22 18 94  
Fax: +33-4-50 24 24 53

Dornier MedTech Europe GmbH  
Moscow Representative Office  
Uliza Mytnaya 3  
Office 21  
119049 Moskau  
Russland  
Tel.: +7-495-230 29 94  
Fax: +7-495-739 51 33

© 2015 Dornier MedTech GmbH. Technische Änderungen vorbehalten.

## Free Download:

G.G. Tailly, M.M. Tailly-Cusse.

'Optical Coupling Control: An Important Step Towards Better ESWL.'

J. Endourol. 28.11 (2014): 1368-1373.



(Dr. Tailly Study)

## CONTACT